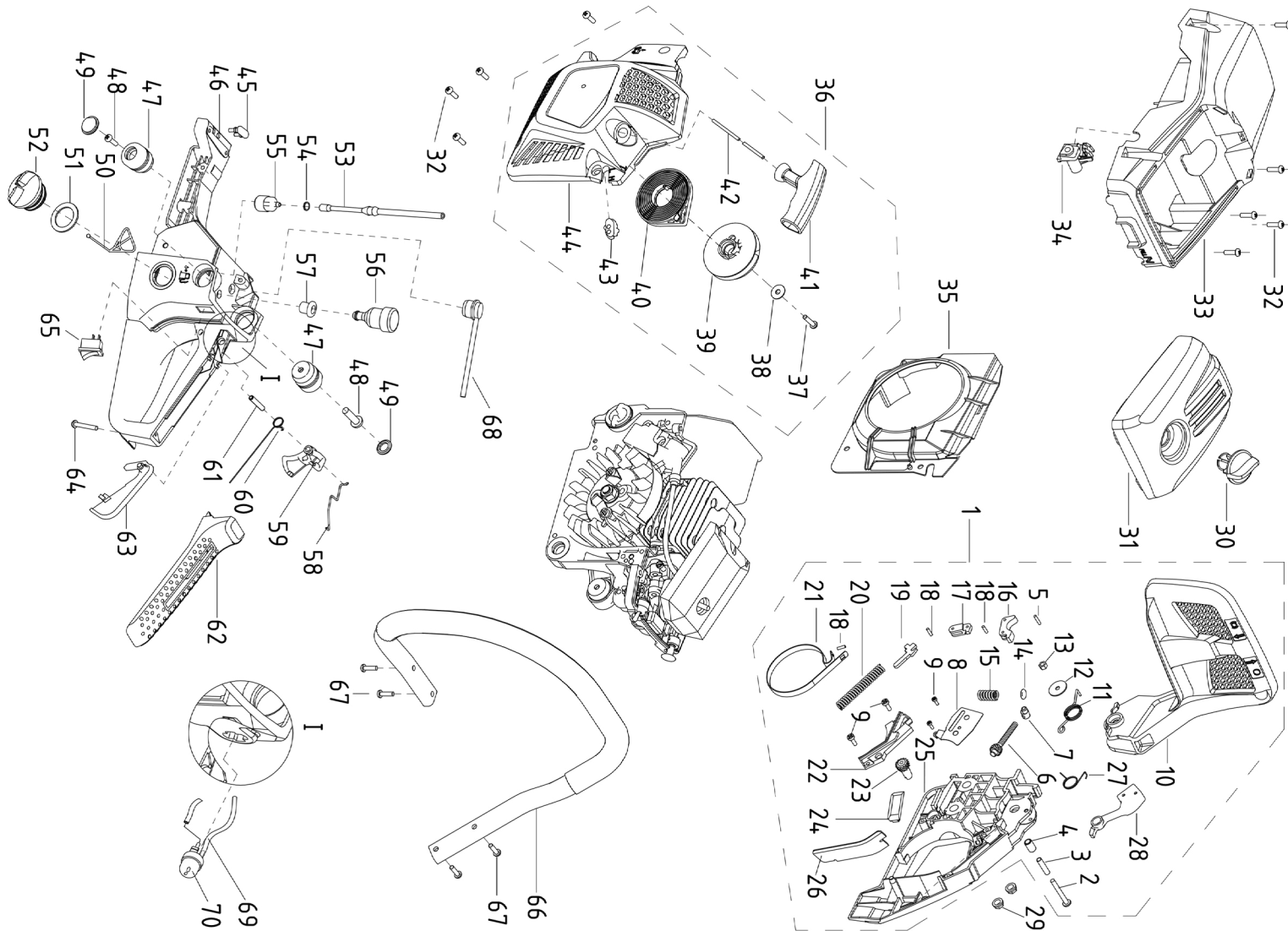


HOUSING					
Number	Name	Number	Name	Number	Name
1	right cover assembly	29	nut M8	57	balancer root
2	screw M5×40	30	air filter lock nut	58	throttle rod
3	shield pipe	31	air filter cover	59	trigger
4	pipe	32	screw M5×16	60	trigger torsion rod spring
5	pin 3×14	33	upper cover plate	61	pin6×22
6	tightener screw	34	idle adjusting guide set	62	handle cover
7	tension block	35	guide flow cover	63	trigger control rack
8	tensioner cover plate	36	starter assembly	64	tapping screw ST4.2×22
9	tapping screw ST4.2×9.5	37	tapping screw ST4.8×14	65	extinction switch
10	front damper	38	washer 5	66	front handle assembly
11	brake torsion rod spring	39	starter palte	67	tapping screw ST4.8×16
12	washer 5.2×20×1.2	40	start coil spring	68	scavenge nozzle
13	nut M5	41	start handle	69	pump tube
14	spring base	42	start stretching wire	70	Primer bulb
15	front damper spring	43	LH sheathing	71	18" Oregon chain
16	main lever	44	starter cover	72	18" Oregon Bar
17	secondary pull-rod	45	shock rubber	73	Guide bar cover
18	pin 3×9	46	base		
19	brake control rod	47	shock rubber gland		
20	brake spring	48	screw		
21	brake strap	49	dust cover		
22	brake spring cover plate	50	anti-drop plate		
23	tension gear	51	O sealing 24.7×3.55		
24	chain guide block	52	petrol cover		
25	right cover	53	fuel tube		
26	dust shield	54	fuel tube circlip		
27	heavy block spring	55	petrol filter componets		
28	heavy block	56	balancer		



MOTOR							
Number	Name	Number	Name	Number	Name	Number	Name
1	cylinder	25	conical spreader base	49	clutch shell	73	earth wire
2	nut M5	26	tapping screw ST4.8×16	50	sprocket	74	guide sleeve
3	washer 5	27	chain shield	51	worm	75	left shock block
4	washer 5	28	screw M5×16	52	cover plate	76	screw M5×25
5	muffler cover plate	29	aeration jet	53	oil seal 15×28×4.5	77	oil shield
6	muffler body	30	aeration jet circlip	54	bearing 6202D grade 15×35×11	78	washer 4
7	muffler sealing plate	31	sponge transition block	55	cushion block	79	screw M4×8
8	muffler connecting screw	32	pinion rack	56	choke rod fixation root	80	screw M4×10
9	screw M5×20	33	screw M5×10	57	choke rod	81	flywheel assembly
10	spark plug	34	oil filter screen	58	right shock block	82	nut M8×1
11	air intake tube sealing plate	35	oil filter	59	shock seat	83	O sealing 20×3.1
12	air intake tube	36	oil tube	60	air intake tube support	84	anti-drop plate
13	screw M5×12	37	screw M4×14	61	tie plate	85	oil cover
14	hold coil	38	oil pump	62	sealing plate of air intake support	86	suction tube circlip
15	cylinder sealing plate	39	sponge transition coil	63	air intake tube flange	87	suction tube 2.5×6×105
16	piston ring	40	nozzle	64	carburetor	88	suction jet
17	piston	41	chain guide block	65	air intake socket	89	left case
18	piston pin circlip	42	double-screw bolt AYM8-M8×26-8.8	66	air filter	90	shield ring 35
19	piston pin	43	clutch	67	double-screw bolt GM5-M5×30	91	oil seal 15×35×4.5
20	needle bearing ring	44	shoe block	68	cushion of air intake socket	92	igniter
21	crank shaft components	45	retainer	69	screw M5×50	93	extinction conductor
22	needle bearing 11×15×12.5	46	clutch spring	70	right case	94	igniter cap
23	semicircular key 3×3.5×10	47	clutch adjusting washer	71	dust plate	95	dust cover
24	conical spring base	48	needle bearing 12×15×14.5	72	pin 5×10	96	case body sealing plate
						97	damper